

PROLUMIA®

LUMIAFLEX

1004



OPERATING INSTRUCTION

46020001	Lumiaflex 1004, 24 Vdc, 10 W/m, 5 m reel, 900 lm/m, 2700 K
46020002	Lumiaflex 1004, 24 Vdc, 10 W/m, 5 m reel, 920 lm/m, 3000 K
46020003	Lumiaflex 1004, 24 Vdc, 10 W/m, 5 m reel, 1000 lm/m, 4000 K
46020005	Lumiaflex 1004, 24 Vdc, 10 W/m, 5 m reel, 980 lm/m, 6500 K



IP65



REACH

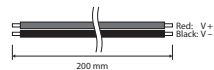
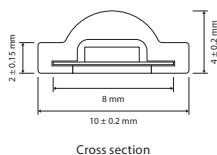
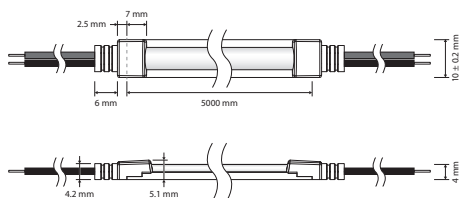
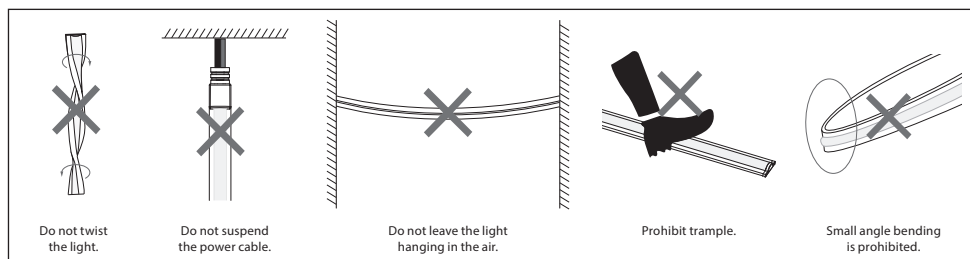


ATTENTION

Please read the following instructions carefully to ensure that mounting operation will be carried out correctly. These instructions should be properly preserved for future reference.

CAUTION

- The unused light should be sealed with the packaging bag to avoid prolonged exposure.
- Please use DC24V isolated constant voltage power supply with ripple voltage less than 5%. Using other types of power supply may damage the light or cause other safety risks.
- In practical application, 20% excess power capacity should be anticipated for the driver to ensure a stable operation of the lighting system.
- It is recommended that professionals connect the power supply. Do not connect the power supply with live power to avoid electric shock.
- Please make sure the constant voltage power supply corresponds with the operating voltage of the system. Pay attention to the red (+) and black (-) polarity of the DC-wires, reversed polarity may cause irreparable damage to the luminaire.
- If the actual application length exceeds the specified length, it will lead to overload, heating and uneven brightness of the light.
- During installation, please do not scratch, twist, or bend the light irregularly. Otherwise, the light may be damaged beyond repair.
- To ensure the life and reliability of the light, please do not over bend the light, which will damage the product itself.
- To protect your eyes, please avoid staring at the glowing surface of the light for a long time.
- Non-professionals are forbidden to install, disassemble and maintain the product.
- Do not use any acid or alkaline adhesive to fix the light (including but not limited to glass glue, etc.)



Red & black 2-core cable:
Red V+ / Black V-

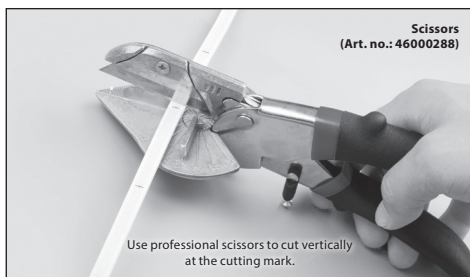
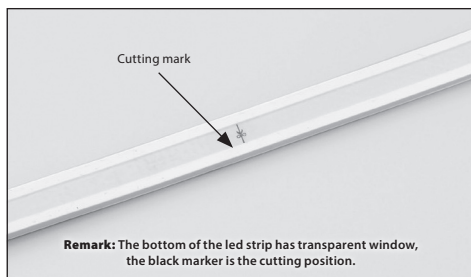
TECHNICAL DATA

Supply voltage:	24 Vdc
Power:	10 W/m
Cutting length:	29.4 mm
Light source:	LED SMD2835
CRI:	> 90
Colour consistency:	<5 SDCM
Lifetime (L70):	>60,000 hours
Electrical safety class:	Class III
Operating temperature:	-20°C ~ +45°C
IP rating:	IP65 (indoor use only)

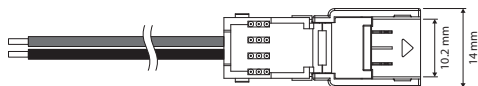
TECHNICAL INFORMATION

Art. no.	Color temperature (K)	Efficiency (lm/m)
46020001	2700	900
46020002	3000	920
46020003	4000	1000
46020005	6500	980

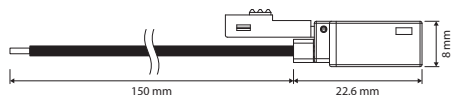
CUTTING MARK



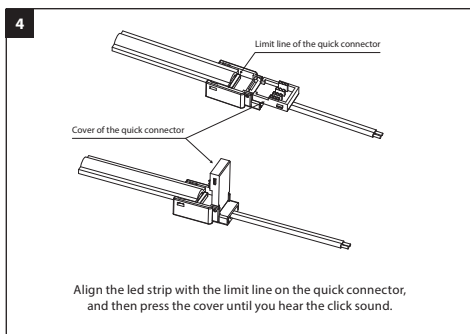
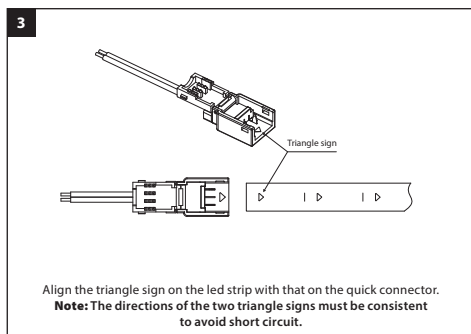
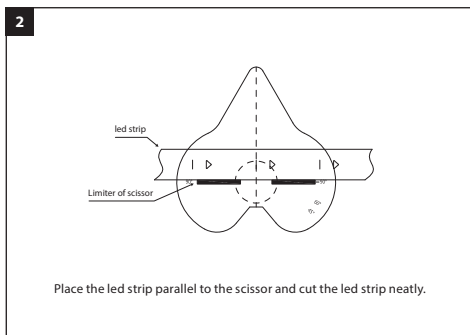
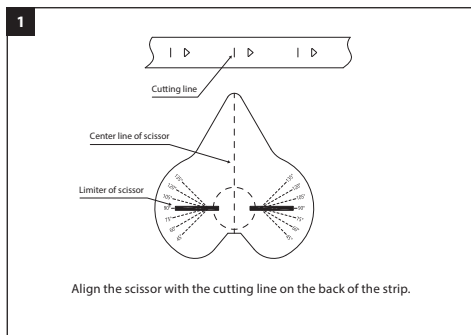
ASSEMBLY / DISASSEMBLY QUICK CONNECTOR



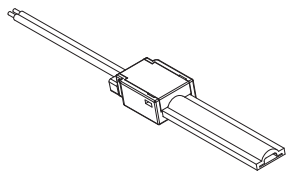
Quick connector (Art. no.: 46020013)
Dimensions: 14 x 22.6 x 8 mm



ASSEMBLY



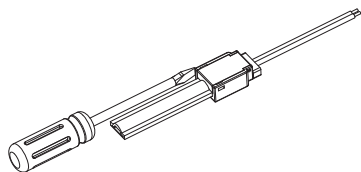
5



Schematic diagram of installation completion.

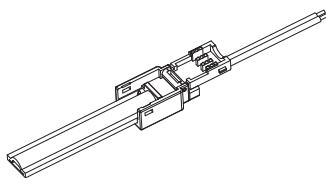
DISASSEMBLY

1



Use a flat-head screwdriver to pry the side of the quick connector along the side gap, and then pry another side.

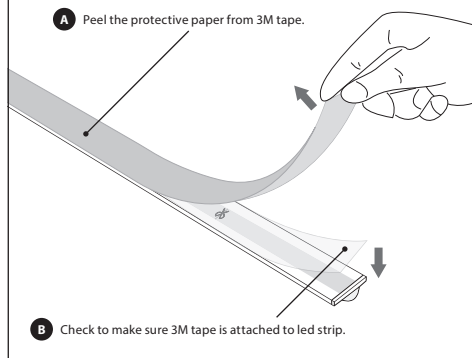
2



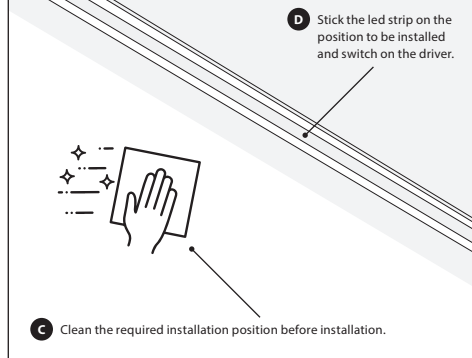
Open the cover and remove the led strip from the needle. **Note:** When the removed led strip is used again, the unit length of led strip that FPCB has been punctured must be cut off to avoid poor contact during reinstallation.

INSTALLATION WITH 3M TAPE

1

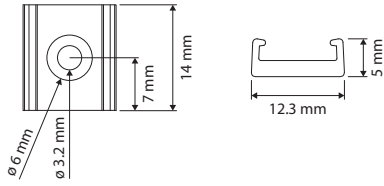


2

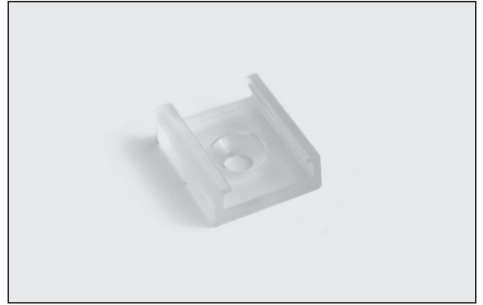


4

MOUNTING CLIP

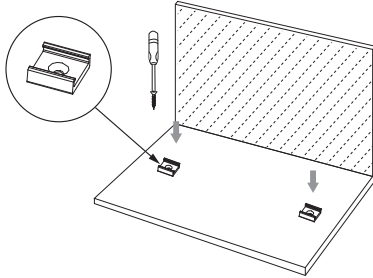


Mounting clip accessory (Art. no.: 46020010)
Dimensions: 14 x 12.3 x 5 mm



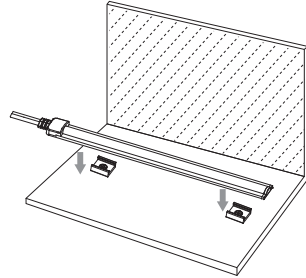
INSTALLATION WITH MOUNTING CLIPS

1



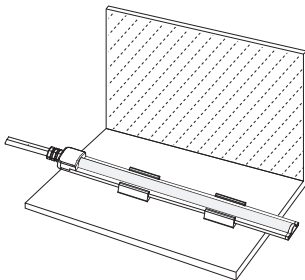
Secure the plastic clips to the mounting surface with a screwdriver.

2



Clip the led strip onto the plastic clips and fix it.

3



The installation is complete. Switch on the driver.

EN

PROLUMIA®

IMPORTER

NEDELKO B.V.

Riga 10

2993 LW BARENDRECHT

T +31 (0)180 64 54 00

E info@nedelko.nl

NEDELKO BELGIUM NV

Prins Boudewijnlaan 49

2650 EDEGEM

T +32 (0)3 826 99 99

E info@nedelko.be

NEDELKO S.R.O.

Ke Slivenci 48

154 00 PRAHA 5 - LOCHKOV

T +420 222 563 003

E info@nedelko.cz

NEDELKO GERMANY GMBH

Heinz-Bäcker-Str. 27

45356 ESSEN

T +49 (0)201 560 503 50

E info@nedelko.de