

PROLUMIA®

PRO-CEILING - ROUND

SURFACE MOUNTED / RECESSED



INSTRUCTION MANUAL

4000170x	Pro-Ceiling Ø 117 mm Surface mounted White/Black 8 W
4000171x	Pro-Ceiling Ø 180 mm Surface mounted White/Black max. 11 W
4000171x	Pro-Ceiling Ø 180 mm Surface mounted White/Black max. 12 W MW-Sensor
4000172x	Pro-Ceiling Ø 240 mm Surface mounted White/Black max. 15 W
4000172x	Pro-Ceiling Ø 240 mm Surface mounted White/Black max. 20 W MW-Sensor
4000172x	Pro-Ceiling Ø 240 mm Surface mounted White/Black max. 15 W Emergency Kit
4000173x	Pro-Ceiling Ø 300 mm Surface mounted White/Black max. 30 W
4000173x	Pro-Ceiling Ø 300 mm Surface mounted White/Black max. 30 W MW-Sensor
4000173x	Pro-Ceiling Ø 300 mm Surface mounted White/Black max. 30 W Emergency Kit
4000174x	Pro-Ceiling Ø 420 mm Surface mounted White/Black max. 40 W
4000174x	Pro-Ceiling Ø 420 mm Surface mounted White/Black max. 42 W MW-Sensor
40001900	Pro-Ceiling Ø 117 mm Recessed White 8 W
40001910	Pro-Ceiling Ø 180 mm Recessed White max. 11 W
40001920	Pro-Ceiling Ø 240 mm Recessed White max. 15 W
40001930	Pro-Ceiling Ø 300 mm Recessed White max. 30 W

CE IP40/IP44



ATTENTION

IMPORTANT - READ THE INSTRUCTION MANUAL CAREFULLY BEFORE INSTALLING THIS FIXTURE.
RETAIN THIS INSTRUCTION MANUAL FOR FUTURE REFERENCE.

CAUTION

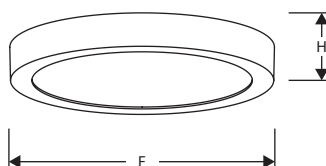
1. This product must be installed by a qualified electrician.
2. Before starting installation, SHUT the line feed AC-power OFF using the circuit breaker.
3. Cross-sectional area of installation wires must be at least 0.75 mm². Installation must be done according to IEC-standards and/or applicable local electrical regulations.
4. This product contains a light source of energy efficiency class C.

GENERAL PRODUCT INFORMATION

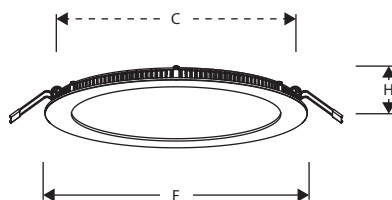
LED-module	SMD 2835-based, non-replaceable
Beam angle	110°
Adjustable CCT	2700-3000-4000 K, slide switch selectable
Adjustable lm-output ¹⁾	DIP switch selectable (see technical product data table)
Ingress Protection	IP40 (Surface mounted), IP20/IP44 (Recessed)
Luminous efficacy	Up to 115 lm/W
Lumen packages	Up to 4300 lm, multi-level adjustable ¹⁾
Median useful life	L80 >100,000 hours
AC Input	220-240 V AC, 50/60 Hz
Operating temperature	-20°C – +40°C
Electrical safety class	Class II
Power supply	Triac-dimmable LED-driver ²⁾
Fixture material	Light weight aluminium / low profile design

¹⁾ Feature not applicable to Pro-Ceiling Ø 117 mm version

²⁾ Except sensor-versions (supplied with a non-dimmable driver)



H = Height
F = Front (Ø)



C = Cutout size (Ø)
H = Height
F = Front (Ø)

INTENDED USE & APPLICATIONS

- Ceiling surface mounted and recessed general lighting
- Energy-saving replacement of compact fluorescent lighting
- Cost-effective quality lighting for new construction and renovation projects
- Suitable for traffic zones, corridors, entrance areas and general spaces
- Refined design with optimal comfort
- Versatile lighting solution for healthcare and educational institutions, commercial and residential construction

TECHNICAL PRODUCT DATA

Item no.	Description	Height (mm)	Front (Ø) (mm)	Cutout size (Ø) (mm)	CCT options (K)	Current (mA)	Power (W)	Output (lm)	Dip switch setting		
									1	2	3
40001700 / White 40001705 / Black	Pro-Ceiling Ø 117 mm 8 W Surface Mounted	39	117	-	2700 3000 4000	500	8	600	-	-	-
40001710 / White 40001715 / Black	Pro-Ceiling Ø 180 mm max. 11 W Surface Mounted	39	180	-	2700 3000 4000	200	6.2	600	OFF	OFF	-
						250	7.5	750	OFF	ON	-
						300	9	900	ON	OFF	-
						350	10.5	1050	ON	ON	-
40001711 / White 40001716 / Black	Pro-Ceiling Ø 180 mm max. 12 W + MW-Sensor Surface Mounted	39	180	-	2700 3000 4000	150	3.8	350	OFF	OFF	OFF
						200	5.0	450	ON	OFF	OFF
						250	6.3	550	OFF	ON	OFF
						300	7.6	700	ON	ON	OFF
						350	8.8	800	OFF	OFF	ON
						400	10.1	950	ON	OFF	ON
						450	11.3	1050	OFF	ON	ON
						500	12.6	1150	ON	ON	ON
40001720 / White 40001725 / Black	Pro-Ceiling Ø 240 mm max. 15 W Surface Mounted	39	240	-	2700 3000 4000	200	7.8	750	OFF	OFF	-
						250	9.7	950	OFF	ON	-
						300	11.7	1150	ON	OFF	-
						350	13.6	1300	ON	ON	-
40001721 / White 40001726 / Black	Pro-Ceiling Ø 240 mm max. 20 W + MW-Sensor Surface Mounted	39	240	-	2700 3000 4000	150	5.6	600	OFF	OFF	OFF
						200	7.4	800	ON	OFF	OFF
						250	9.3	1000	OFF	ON	OFF
						300	11.1	1200	ON	ON	OFF
						350	13.0	1400	OFF	OFF	ON
						400	14.8	1600	ON	OFF	ON
						450	16.7	1800	OFF	ON	ON
						500	18.5	2000	ON	ON	ON
40001722 / White 40001727 / Black	Pro-Ceiling Ø 240 mm max. 15 W + Emergency Kit Surface Mounted	39	240	-	2700 3000 4000	200	7.8	750	OFF	OFF	-
						250	9.7	950	OFF	ON	-
						300	11.7	1150	ON	OFF	-
						350	13.6	1300	ON	ON	-
40001730 / White 40001735 / Black	Pro-Ceiling Ø 300 mm max. 30 W Surface Mounted	39	300	-	2700 3000 4000	500	18.4	2150	OFF	OFF	-
						550	20.2	2350	OFF	ON	-
						600	22.0	2550	ON	OFF	-
						700	25.7	3000	ON	ON	-
40001731 / White 40001736 / Black	Pro-Ceiling Ø 300 mm max. 30 W + MW-Sensor Surface Mounted	39	300	-	2700 3000 4000	350	12.9	1500	OFF	OFF	OFF
						400	14.7	1750	ON	OFF	OFF
						450	16.5	1950	OFF	ON	OFF
						500	18.4	2150	ON	ON	OFF
						550	20.2	2350	OFF	OFF	ON
						600	22.0	2550	ON	OFF	ON
						650	23.9	2800	OFF	ON	ON
						700	25.7	3000	ON	ON	ON
40001732 / White 40001737 / Black	Pro-Ceiling Ø 300 mm max. 30 W + Emergency Kit Surface Mounted	39	300	-	2700 3000 4000	700	19.6	2250	OFF	OFF	-
						800	21.3	2450	OFF	ON	-
						850	24	2800	ON	OFF	-
						900	25.7	3000	ON	ON	-
40001740 / White 40001745 / Black	Pro-Ceiling Ø 420 mm max. 40 W Surface Mounted	48	420	-	2700 3000 4000	700	25.3	2900	OFF	OFF	-
						800	28.9	3300	ON	OFF	-
						950	34.3	3900	OFF	ON	-
						1050	37.9	4300	ON	ON	-
40001741 / White 40001746 / Black	Pro-Ceiling Ø 420 mm max. 42 W + MW-Sensor Surface Mounted	48	420	-	2700 3000 4000	700	25.3	2900	OFF	OFF	OFF
						750	27.1	3100	ON	OFF	OFF
						800	28.9	3300	OFF	ON	OFF
						850	30.7	3500	ON	ON	OFF
						900	32.5	3700	OFF	OFF	ON
						950	34.3	3900	ON	OFF	ON
						1000	36.1	4100	OFF	ON	ON
						1050	37.9	4300	ON	ON	ON
40001900 / White	Pro-Ceiling Ø 117 mm 8 W Recessed	19	117	108	2700 3000 4000	500	8	600	-	-	-
40001910 / White	Pro-Ceiling Ø 180 mm max. 11 W Recessed	19	180	165	2700 3000 4000	200	6.2	600	OFF	OFF	-
						250	7.5	750	OFF	ON	-
						300	9	900	ON	OFF	-
						350	10.5	1050	ON	ON	-
40001920 / White	Pro-Ceiling Ø 240 mm max. 15 W Recessed	19	240	225	2700 3000 4000	200	7.8	750	OFF	OFF	-
						250	9.7	950	OFF	ON	-
						300	11.7	1150	ON	OFF	-
						350	13.6	1300	ON	ON	-
40001930 / White	Pro-Ceiling Ø 300 mm max. 30 W Recessed	19	300	285	2700 3000 4000	500	18.4	2150	OFF	OFF	-
						550	20.2	2350	OFF	ON	-
						600	22.0	2550	ON	OFF	-
						700	25.7	3000	ON	ON	-

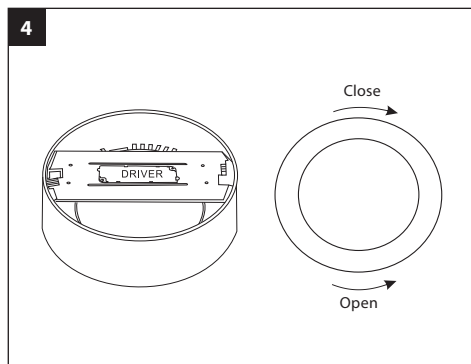
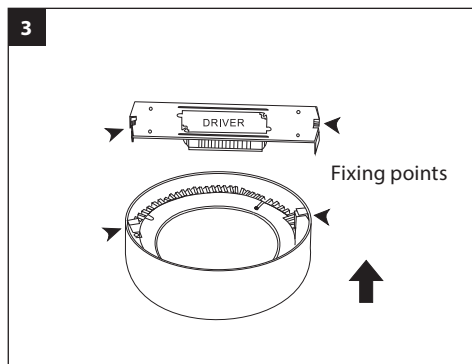
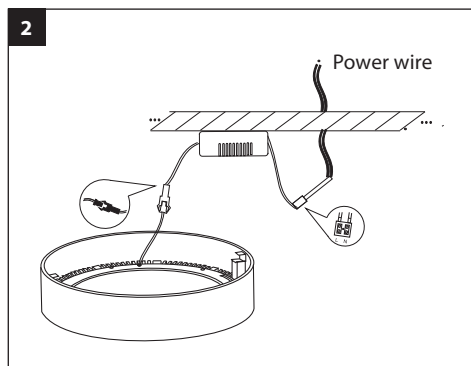
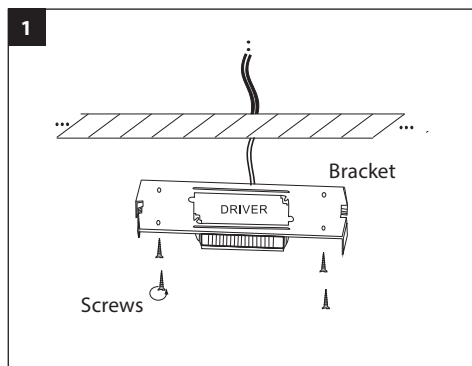
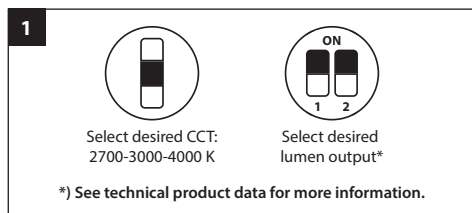
Luminous flux values (column "Output") and in the table above apply to CCT setting 3000 K / products in white finish.
The luminous flux level at 2700 K or 4000 K can be derived by multiplying a corresponding value from the table by respectively 0.93 and 1.07.
The power dissipation can be derived by multiplying the corresponding data by respectively 0.97 and 0.99.

Luminous flux conversion factor from white to black finish: 0.87.

Default driver setting is at 3000 K, associated output values are highlighted in grey.

SURFACE MOUNTED INSTALLATION


1. Select the desired CCT and desired lumen output*.
2. Fix the bracket to the installation surface with the supplied screws.
3. Connect the power wire to the driver. Connect the driver with the luminaire.
4. Pay attention to the markings on the luminaire and the mounting bracket and place the luminaire on the bracket.
5. Slide the luminaire into the hinges on the bracket. Reverse direction to open it.



RECESSED INSTALLATION


1. Select the desired CCT and desired lumen output*.
2. Install the clips as shown in the picture.
3. Cut a hole. For the right cut out size refer to the corresponding item number on page 3.
4. Connect the power wire to the driver. Connect the driver with the luminaire.
5. Push the clips up and place the luminaire in the hole in the ceiling.
6. Secure the luminaire tightly. The clips will fasten themselves.

1



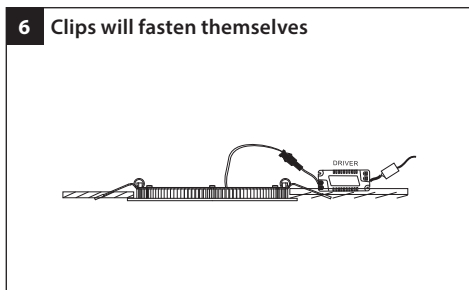
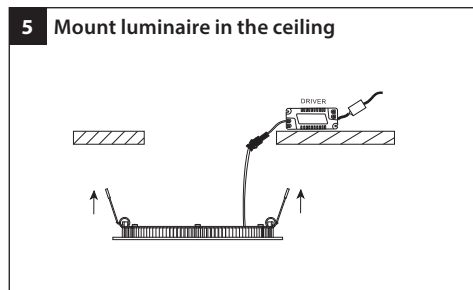
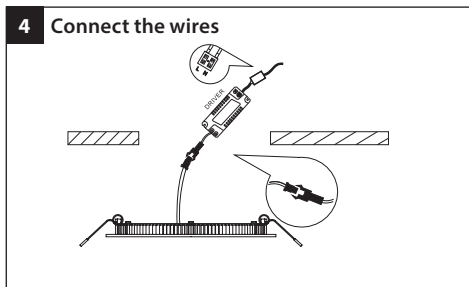
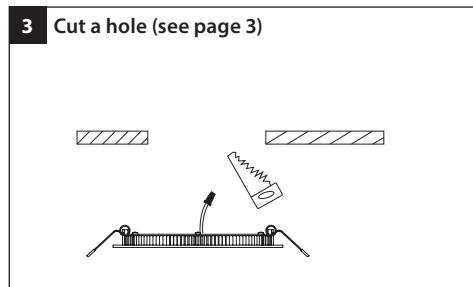
Select desired CCT:
2700-3000-4000 K

ON



Select desired
lumen output*

*) See technical product data for more information.



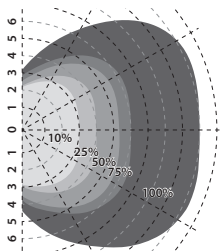
MICROWAVE SENSOR - DESCRIPTION

Detection sensitivity: 10%* / 25% / 50% / 75% / 100% (adjustable)

Daylight sensor: 2 lux / 10 lux / 25 lux / 50 lux / Disable (adjustable)

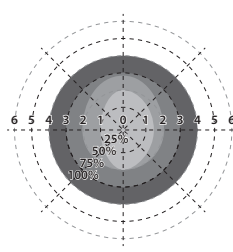
Hold time: 5 sec. / 30 sec. / 90 sec. / 3 min. / 20 min. / 30 min. (adjustable)

Mounting height: 4 m. max.



Wall mounting detection area (Unit: m)
Suggested installation height: 2 m

Speed: 0.3 m/s; sensitivity: 10%/25%/50%/75%/100%

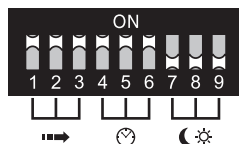


Ceiling mounting detection area (Unit: m)
Suggested installation height: 3 m

Speed: 0.3 m/s; sensitivity: 25%/50%/75%/100%

**) When installed at 3 m mounting height, sensor with 10% detection area is unable to detect motion signals.*

MICROWAVE SENSOR - PARAMETER SETTINGS

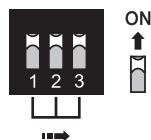


Factory setting

Detection area: 100%
Hold time: 5 sec.
Daylight sensor: Disable

→ Detection sensitivity

This determines the effective range of the motion detector and is set with DIP switches on the sensor, please see figure below. Note that reducing the sensitivity will also narrow the detection range.

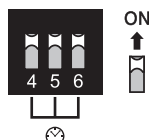


	1	2	3	
I	ON	ON	ON	100%
II	-	ON	ON	75%
III	ON	-	ON	50%
IV	-	-	ON	25%
V	-	-	-	10%



⌚ Hold time

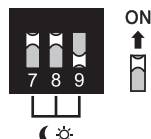
This determines the time the fixture remains at 100% and is set with DIP switches on the sensor, please see figure below. The walk test (5 sec.) setting is useful when installing the fixture to establish correct operation and range.



	4	5	6	
I	ON	ON	ON	5s
II	-	ON	ON	30s
III	ON	-	ON	90s
IV	-	-	ON	3min
V	ON	ON	-	20min
VI	-	-	-	30min

☀ Daylight sensor

This switch enables/disables the integrated photocell. When enabled, the fixture will remain off at higher ambient light levels when motion is detected depending on the selected light level.



	7	8	9	
I	ON	ON	ON	2Lux
II	ON	ON	-	10Lux
III	-	ON	-	25Lux
IV	ON	-	-	50Lux
V	-	-	-	Disable

CIRCUIT BREAKER MAXIMUM LOAD

Item no.	Description	No. of units per circuit breaker type			
		B16	B20	C16	C20
40001700 40001705	Pro-Ceiling Ø 117 mm 8 W Surface Mounted	28	35	48	58
40001710 40001715	Pro-Ceiling Ø 180 mm max. 11 W Surface Mounted	28	35	48	58
40001711 40001716	Pro-Ceiling Ø 180 mm max. 12 W + MW-Sensor Surface Mounted	64	80	109	133
40001720 40001725	Pro-Ceiling Ø 240 mm max. 15 W Surface Mounted	60	75	102	125
40001721 40001726	Pro-Ceiling Ø 240 mm max. 20 W + MW-Sensor Surface Mounted	64	80	109	133
40001721 40001726	Pro-Ceiling Ø 240 mm max. 15 W + Emergency Kit Surface Mounted	60	75	102	125
40001730 40001735	Pro-Ceiling Ø 300 mm max. 30 W Surface Mounted	19	24	32	40
40001731 40001736	Pro-Ceiling Ø 300 mm max. 30 W + MW-Sensor Surface Mounted	48	60	82	100
40001731 40001736	Pro-Ceiling Ø 300 mm max. 30 W + Emergency Kit Surface Mounted	19	24	32	40
40001740 40001745	Pro-Ceiling Ø 420 mm max. 40 W Surface Mounted	7	9	12	14
40001741 40001746	Pro-Ceiling Ø 420 mm max. 42 W + MW-Sensor Surface Mounted	38	48	65	79
40001900	Pro-Ceiling Ø 117 mm 8 W Recessed	28	35	48	58
40001910	Pro-Ceiling Ø 180 mm max. 11 W Recessed	28	35	48	58
40001920	Pro-Ceiling Ø 240 mm max. 15 W Recessed	60	75	102	125
40001930	Pro-Ceiling Ø 300 mm max. 30 W Recessed	19	24	32	40

ENVIRONMENTAL PROTECTION

Waste electrical products should not be disposed of with household waste. Please recycle where facilities exist. Check with your local authority or retailer for recycling advice.



PROLUMIA®

IMPORTER

NEDELKO B.V.

Riga 10

2993 LW BARENDRECHT

T +31 (0)180 64 54 00

E info@nedelko.nl

NEDELKO BELGIUM NV

Prins Boudewijnlaan 49

2650 EDEGEM

T +32 (0)3 826 99 99

E info@nedelko.be

NEDELKO S.R.O.

Ke Slivenci 48

154 00 PRAHA 5 - LOCHKOV

T +420 222 563 003

E info@nedelko.cz

NEDELKO GERMANY GMBH

Feldbergstraße 57

61440 OBERURSEL

T +49 6171 8989 594

E info@nedelko.de