

NEDELKO

YOUR
TECHNICAL
SPECIALIST.

**PROVIDING THE BEST
SOLUTION
FOR YOUR BUSINESS**

WWW.NEDELKO.EU

PROVIDING THE BEST SOLUTION FOR YOUR BUSINESS

YOUR TECHNICAL SPECIALIST

Nedelko is your trusted partner and supplier of (electro)technical materials, (intelligent) LED lighting and energy and safety solutions. With more than 100 employees and offices in the Netherlands, Belgium, Germany and the Czech Republic, we provide the European electrotechnical market with the best products. Fast and always full of conviction!

Our head office and distribution centre are both located in Barendrecht, the Netherlands. We do not just distinguish ourselves by a wide product range and fast delivery; personal contact and building sustainable relationships are just as important to us. Our technical specialists work with passion on wonderful solutions.

MISSION

Providing the (electro)technical market with suitable solutions by means of a wide product range and up-to-date technical knowledge.

VISION

As a supplier, Nedelko occupies a leading position within the electrotechnical sector by means of a progressive product range and an extensive package of additional services. This enables us to provide our customers with thorough advice and the right product and project support in a passionate way. An equal, honest and open relationship is very important to us. Together we work towards a sustainable future.





AVAILABLE FROM STOCK

Nedelko has a large number of standard products in stock. We can deliver these products particularly fast, which is really nice!



WIDE RANGE

We have a wide range of more than 50,000 products. We constantly monitor the market's demand and ensure that our offer fits your needs perfectly.



SPECIALIST KNOWLEDGE

Nedelko boasts skilled professionals who are always up-to-date with the latest developments in your sector. We like to share our knowledge.



PROJECT SUPPORT

We will gladly give you personal advice about the realization of your project. Our specialists will guide you through the entire process as desired. Together we ensure a perfect outcome of your project.



CUSTOMISATION

Nedelko provides a tailor-made solution for various product groups. We always rise to the challenge. Our technical department will professionally customize the product you require.



AFTERSALES

Good customer contact is something we value highly. You can always ask us for additional information, we solve problems quickly and we have an excellent RMA policy.

TABLE OF CONTENTS

FIND PRODUCTS EASILY

CABLE & INSTALLATION MATERIALS PROPER AND SAFE INSTALLATION

7 - 20

Cable ties	8 - 10
Cable protection	11
Mounting tape	12
Velcro	13
Conduit	14
Shrink tubing	15
Insulating material	16
Wire end ferrule & cable lug	17
Cable gland	18
Plug & wall anchor	19

INTERCONNECTION EVERYTHING EXPERTLY CONNECTED

21 - 25

Connectors	22 - 25
------------	---------

IDENTIFICATION ENSURE RECOGNITION AND SAFETY

27 - 33

Wire & cable coding	28
Labels & tags	29
Printers & software - Identification	30
Conductor marking	31
Warehouse identification	32
Printers & software - Signage	33

SAFETY

ENSURE CONTROL OF HAZARDOUS SITUATIONS

35 - 45

Lockout tagout	36
Safety showers	37
Safety gates	38
Modular stairs & work platforms	39
Loading platform systems, gangways	40
Anti-slip products	41
Cable bridges	42
Safety hooks	43
Safety signaling	44
Torches	45

SUSTAINABLE SOLUTIONS

FOR A WIDE VARIETY OF APPLICATIONS

47 - 50

Batteries	48
Rechargeable batteries	49
LED lighting	50

EXCELLENT CUSTOMER
SERVICE IS OUR FOCUS

PERSONAL

SOLUTION ORIENTED

SUSTAINABLE

CABLE & INSTALLATION MATERIALS

PROPER AND SAFE
INSTALLATION

PRODUCTS

Cable ties

Cable protection

Mounting tape

Velcro

Conduit

Shrink tubing

Insulating material

Wire end ferrule & cable lug

Cable gland

Plug & wall anchor



CABLE TIES

Cable ties hold cables, wires and conductors together securely. The package of cable ties now consists not only of the Ty-Rap® – originally from Thomas & Betts – but of a wide range of cable ties that can be used for a wide variety of purposes. There are cable ties made of plastic with metal closure, cable ties made of full plastic and metal ties used mainly for heavy-duty (industrial) applications. Special versions are also available, such as detectable, Tefzel® and heat-resistant versions.



TY-RAP®

- The original
- Besides standard cable ties also heat resistant, chemical resistant, detectable, etc.



TY-MET®

- Cable ties in stainless steel 304, 316 and coated
- Ball closure type, ladder type and reusable



TY-FAST®

- Made entirely of plastic
- In large and small package
- In lengths up to 1,214 mm



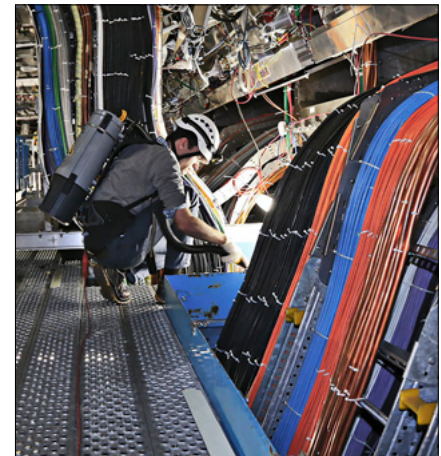
ACCESSORIES

- Self-adhesive cable tie mounts and fittings
- Exceptionally strong and durable adhesive
- Also suitable for screw mounting



MOUNTING TOOL

- Ergonomic and easy to use
- Suitable for all brands of cable ties
- For a professional result



CABLE TIES

With our cabling and fastening systems, we anticipate trends in the market, constantly tailoring service to customer needs. Elematic invented the patented 2-LOCK™ premium cable tie with double stainless steel locking for the best performance. With Pro-Install's own brand of cable ties, a quality alternative is offered. The range consists of plastic and stainless steel versions that can be used for the most common applications.



2-LOCK CABLE TIES

- The strongest plastic cable tie in the world
- With unique stainless steel closure
- Fully smooth strap
- In transparent and UV-resistant black



SOLID PLASTIC CABLE TIES

- Equipped with all quality marks
- In various widths and lengths up to 1 meter
- Also detectable cable ties
- High quality at a low price



STAINLESS STEEL CABLE TIES

- In stainless steel 304 uncoated
- At very attractive prices
- In widths of 4.5 and 8.0 mm
- Up to 1,020 mm long

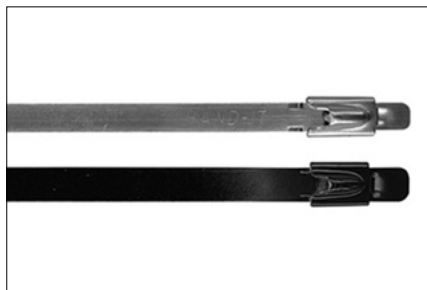


SOLAR CLIPS

- Quick installation on solar panels
- 0.7 - 3.0 mm and 3.0 - 6.0 mm profiles
- No tools required

STAINLESS STEEL CABLE TIES

Stainless steel cable ties provide solutions for applications in extreme environments, where safety is the first priority. By working closely with customers in the shipbuilding, military and aerospace industries, a great deal of experience is gained to arrive at unique solutions and it is ensured that the products perform at their best during applications. All products are produced from steel, whose quality is higher than the industry standard, and a strict testing regimen is followed for each run.



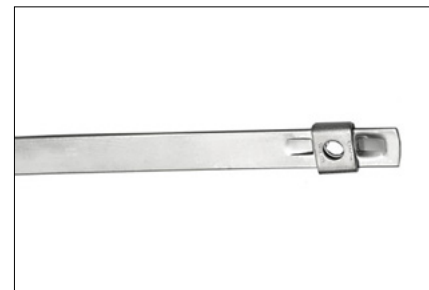
BALL-LOK TIES

- Enhanced tensile strength
- In stainless steel 304, 316 and coated
- Quick installation



MULTI-LOK TIES

- In stainless steel 316; coated and uncoated
- No special tools required
- in 7 and 12 mm width



(MINI) TIE-LOK TIES

- Low profile with narrow head
- In widths of 4.5 and 6.35 mm
- Unique locking mechanism; prevents slipping



TIES

- Reusable
- No special tools required
- Also with extra thick coating



CABLE PROTECTION

Various options for bundling cables and cords in electrical installations, electronics and telecom installations, among others. Available in a variety of sizes and colors, the protective sleeving is resistant to abrasion and chemicals. Also available on request in polyamide and self-extinguishing polyester.



PROTECTIVE SLEEVING

- Woven polyester protective sleeving
- Mechanical protection and bundling
- The material is resistant to abrasion and chemicals



PROTECTIVE SLEEVING

- Woven polyester protective sleeving
- Mechanical protection and bundling
- The material is resistant to abrasion and chemicals



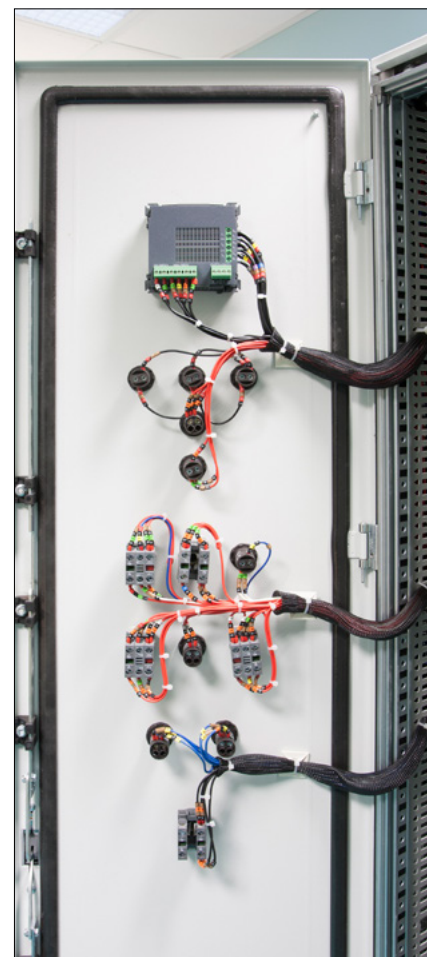
SPIRAL WRAP

- Quality at a low price
- In transparent and black
- Extremely flexible polyethylene



CABLE EATER

- Available in 4 default colors
- Packaged in convenient cardboard box
- Includes free tool for processing



STAINLESS STEEL MOUNTING TAPE

The wide range of mounting tapes consists of a range of very strong stainless steel tapes, which offer very good resistance to oxidation and weathering, among other things. With a choice of stainless steel types and the ability to choose between coated and uncoated (however, applies only to 316 stainless steel and All Purpose mounting tapes), the right mounting tape can be found for every application. Together with the many accessories, such as fasteners and (screw) clamps, you save both time, money and effort during installation.



CLAMP ON ROLL

- In steel 201, 304, 316 Alloy 400 and 317L
- In cardboard box or convenient plastic dispenser
- Various closures available



ALL PURPOSE STRAP

- For fastening with screw or nut and bolt
- Uncoated / halogen-free coating (PPA 571)
- Easy to install with standard hand tools



BAND FAST®

- Pre-assembled band with closure
- COLOR-IT® Coatings are available in a variety of colors and types
- Saves on assembly time



COLLETS

- For reliable assembly and fast processing



VELCRO

Velcro bundles cables, cords and wires in a smart and safe way. The Velcro® brand develops hook and loop fasteners for a huge variety of industrial applications. It is used in the textile industry, but also has other (industrial) applications... for example, in the processing of data and telecommunications cables. Here, bundling with Velcro is mandatory to prevent cable stringing. The Velcro strap is strong, reusable, easily adjustable and keeps cables from getting damaged.



ONE-WRAP® TAPE

- Double-sided Velcro
- Heavy quality made from a single piece
- Standard color black; other colors upon request



ONE-WRAP® STRAP

- Quick fasteners made to measure 20 x 200 mm
- Available in 10 colors as standard
- Other widths and lengths on request



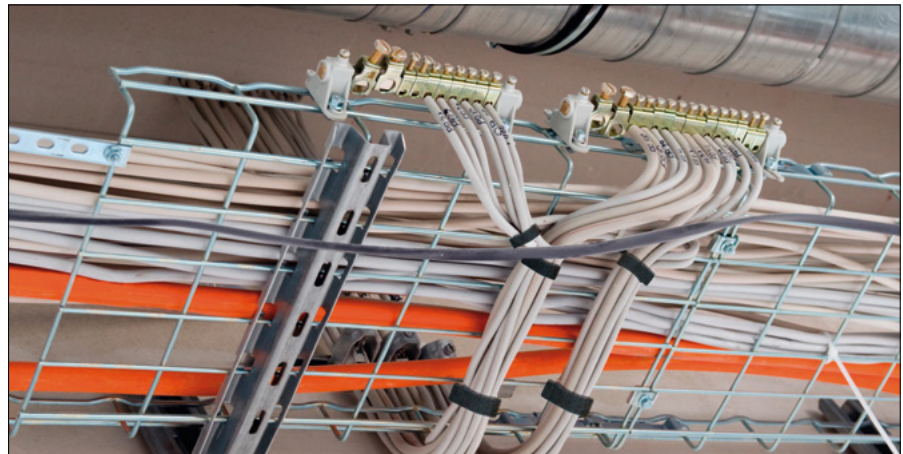
QWIKTIE

- Double-sided thin and strong Velcro
- Ideal for (data) cabling
- Low priced



SINGLE-SIDED VELCRO

- Separate hook and loop section
- Both with and without adhesive coating
- On 25-meter rolls in various widths



PROTECTIVE CONDUITS

The extensive range consists of flexible conduits and associated fittings for the purpose of electrical wiring and cabling. The protective conduits offer optimal protection, are easy to assemble and, of course, meet the industry's high standards. The package includes metal (with or without plastic sheathing) and all-plastic protective conduits. Explosion-proof fittings can also be supplied for use in explosive atmospheres, including ATEX / IECEx, UL / CSA, EAC Ex and INMETRO.



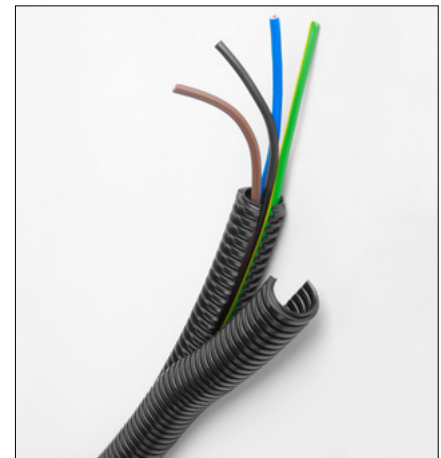
PROTECTIVE CONDUITS AND LINKS

- Choice of various materials
- UV-resistant, halogen-free and flame-retardant versions available



CONNECTABOX

- Weatherproof, IP68/IP69 junction box
- Designed to ensure cabling safety and simplify cable management



SHRINK TUBING

Shrink tubing insulates and protects cable connections from abrasion, corrosion and chemicals. It is easy to use, fast shrinking and non-melting. Available in thick, medium and thin-walled versions and in various colors and shrink ratios. Several types are coated with adhesive, making them water resistant. Shrink tubing is available in rolls, pre-cut, or in convenient box packaging. A special hair dryer is available for quick and optimal installation.



THIN-WALL HEAT SHRINK TUBING

- In box packing, in rolls or separate lengths
- In all common colors
- Both with and without adhesive coating



ASSORTMENT BOX

- Shrink ratio 2:1
- Various colors
- Available in sizes up to 19.1 mm



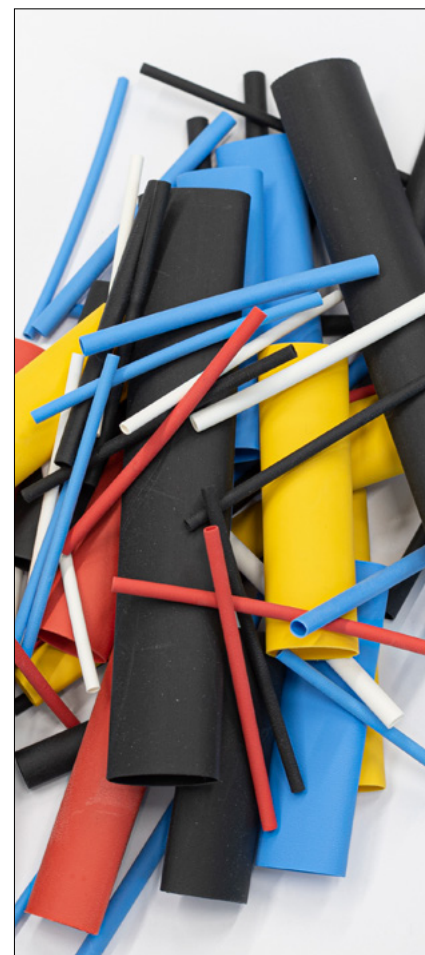
MEDIUM AND THICK-WALL HEAT SHRINK TUBING

- In shrink ratio 3:1 and 4:1
- Fitted with a hot melt adhesive
- In the color black



TOOLS

- Hot air blower for proper crimping
- Temperature range from 350°C up to 500°C
- Various nozzles available



INSULATION MATERIAL

PVC insulating sleeving from our private label Pro-Install is mainly used in cable harnesses. Thermal or electrical insulation provides greater safety in the workplace. Insulation tubing is supplied in rolls of 100 meters. PVC insulating tape of the Elematic brand has a high insulating capacity (600 V), offers good mechanical protection and is characterized by the flexibility of the material. It is self-extinguishing and easy to apply. The tape has high abrasion resistance and good resistance to acids, alkalines and (highly) variable weather conditions.



INSULATION SLEEVE

- Non-shrinkable PVC insulation sleeve
- In bundles of 100 meters
- Available in black and green/yellow



INSULATING TAPE

- In widths of 0.15 and 0.18 mm
- In 9 different colors
- Approved according to EN 60454-2, CEI EN 60454-3-1; BS 3924



WIRE END FERRULE & CABLE LUG

Wire ferrules are used on flexible conductors and can make a solder-free connection that is not susceptible to interference. Polypropylene insulated copper sleeves ensure perfect contact in the terminal strip. Cable lugs also come in all shapes and sizes. Depending on the area of application, one uses an insulated or an uninsulated version, for example, for making electrical connections or installing electrical wiring in switchboards.



WIRE FERRULES

- High conductivity
- 3 color codings: T, W and D
- Available in large and small package



INSULATED CABLE LUGS

- In PVC and nylon versions
- All versions up to 6 mm²
- UL certified



CRIMP CABLE LUGS

- Made of 99.9% electrolytic copper
- With inspection hole
- According to standard IEC 1238-1 : 1993

CABLE GLANDS

ProGland's own label's unique and high-quality cable glands offer a durable and waterproof solution for all kinds of cable entries. The easy and very quick assembly saves considerable time, which in turn saves on costs. The glands are available in polyamide, brass and stainless steel versions and in a variety of sizes (both metric, and PG). Of course, the necessary accessories and tools are available to optimally deploy the cable glands.



STANDARD CABLE GLANDS

Cable glands for professional use in industrial areas.



EMC CABLE GLANDS

Cable glands for easy and EMC-compliant attachment of shielded cables.



EX CABLE GLANDS

Cable glands for use in explosive environments.



SOLUTIONS FOR PRESSURE EQUALIZATION

Pressure compensation elements prevent the formation of condensation in highly sealed electronic and electrical components.



ACCESSORIES

Accessories and additional items for cable glands and pressure compensation elements.



PLUGS & WALL ANCHORS

With our range of plugs and wall anchors, materials can be securely and professionally fastened to any type of wall. Plugs are available for concrete, stone and aerated/gas concrete walls. There is also a solution for hollow walls consisting of drywall and other types of board material. A unique product in the range is the innovative, universal BLUEFIX 2-component plug, which performs optimally in any base material.



BLUEFIX 2-COMPONENT PLUGS

Elematic BLUEFIX is the first plastic plug that consists of 2 different plastic components. This great innovation is especially suitable for (gas) concrete, brick, drywall and various types of masonry, among others. For all of these situations, you will only want to use BLUEFIX from now on!

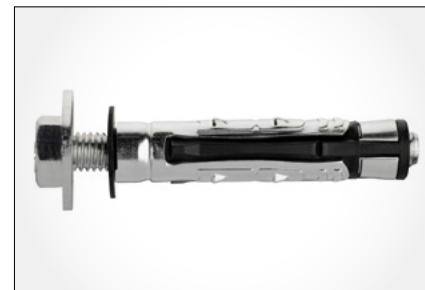
While screwing in, the anti-rotating fins provide the best grip in the material. The unique dynamic collar prevents damage to drywall and provides a smooth finish. The special construction and structure create a perfect knot in situations with a hollow wall.

BLUEFIX is the first universal high-performance plug, tested under critical and seismic conditions... the ultimate technology!



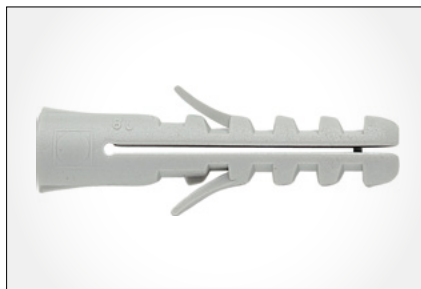
T6 PLUGS

- The only plug with multidirectional expansion
- Can be used with different types of screws



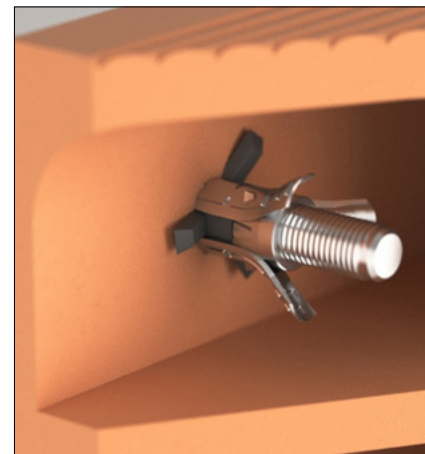
TRIDER WALL ANCHORS

- The ultimate alternative to chemical anchors
- Effective and reliable wall anchor suitable for both hollow and solid substrates
- Tensile strength goes up to 250kg



E/EB PLUGS

- The ultimate standard plug
- For general use
- Available with or without collar





Extra attention for you as a customer...that is what we value highly. Do you have questions about a quotation?

We are happy to help you.



INTERCONNECTION EVERYTHING EXPERTLY CONNECTED

PRODUCTS

Inotec connectors

Marechal cconnectors

PHG cconnectors

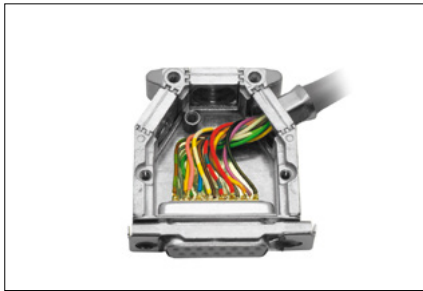
Glenair connectors

Amphenol connectors



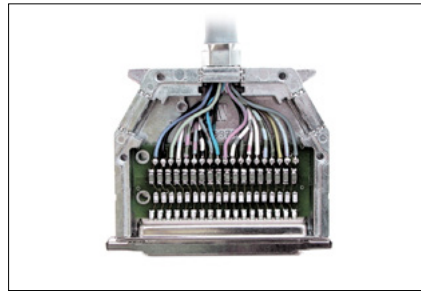
CONNECTORS

Inotec products are designed for D-Sub connectors in particular and have a very high-quality EMC finish. Using a special crimping technology, it is possible to accurately finish the shield at 360 degrees. Inotec also has unique solutions in the area of various forms of bus technology. For example, the caps can be provided with their own IP address. These solutions are widely used for railway, medical and high-performance industrial networking applications.



D-SUB M1 CONNECTOR

- Without lock
- Can be used as a coupling connector
- Enclosures are compatible with the Inotec coding system



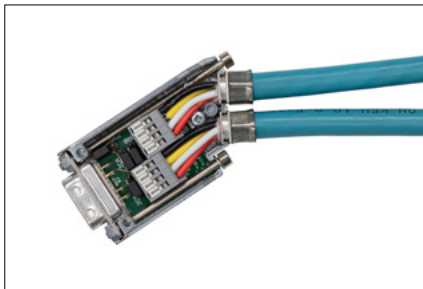
D-SUB M2 CONNECTOR

- Standard design with bolts for secure coupling when connected
- With a larger interior for circuit board or mixed cable



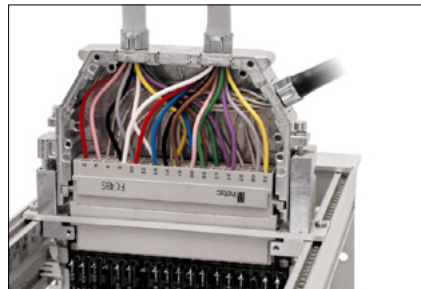
D-SUB M3 CONNECTOR

- Assemble safely and without tools
- Thread-forming locking screws for secure connection



MSBS CONNECTOR

- The enclosures can be placed on top of each other with a distance of 33 mm
- Special crimp geometry CP400 for bus cables



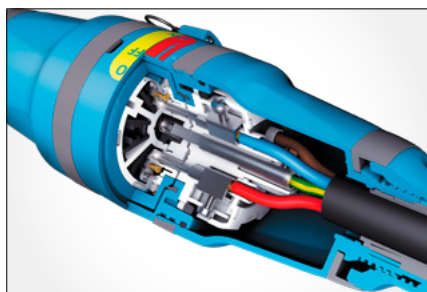
EMC CONNECTOR

- Specially made for 19-inch cabinets, such as in control rooms or power distribution boards
- Developed with focus on EMC, robust, easy to assemble/disassemble



CONNECTORS

Marechal's product range offers solutions especially for power applications. The connectors are available in plastic and metal versions with multi-contacts. There are special power connectors for the food industry, as well as for Ex environments and the (petro)chemical industry. The connectors are also available as single pole power connections for ship-to-shore solutions, for example.



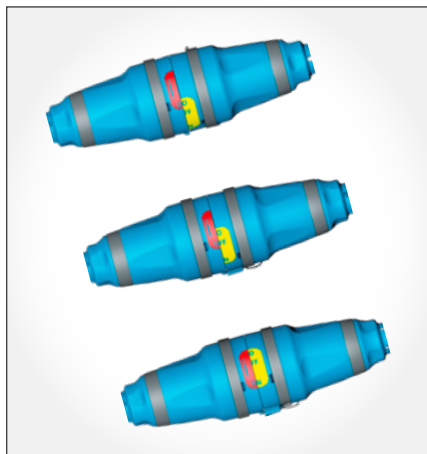
EVO

- The first connector, switch and work switch in one
- Unique Twist & Switch feature ensures a safe working environment



DECONTACTOR™

- Ex-proof electrical plug and socket system with an integrated switch
- Industrial electrical connections comply with the latest regulations



DSN DECONTACTOR

- Special (pin) contact technology makes it more resistant to high vibrations
- Heavy mechanical plastic housing (fiberglass reinforced)



CONNECTORS

PHG is a leading company that develops and manufactures innovative components for identification systems. PHG has been making cables and plugs for more than 25 years. It was a logical development for PHG to develop cable assemblies. With these assemblies, the customer has the ability to individually adapt cable fittings to the equipment. Meanwhile, PHG has cable assemblies, wire harnesses, connectors and complete assembly groups in its range.



INSTRUMENTATION CONNECTORS

This high-quality connector series is particularly used where compact design and good shielding due to EMC influences are important.

The standard program consists of:

- 3-pin, 4-pin and 5-pin
- Male, female, straight and angled versions
- Injected cable with variable length (LiYCY cable)
- Available in m8, m9 and m12

Other designs such as pin quantity or cable type are available upon request. Within this series, corresponding chassis parts are also available in various designs. This connector series is fully compatible with other series within the instrumentation market.



CONNECTORS

Glenair makes connectors in accordance with V96929, VG95234, VG95328 standards. Marine Bronze version provides extra robust connections for offshore installations, platforms, seaports and geologic-oceanographic applications.



MARINE BRONZE SEACROW CONNECTORS

Glenair manufactures connectors that comply with V96929, VG95234 and VG95328 standards. The Marine Bronze connectors are very robustly designed. They can be used successfully in all offshore installations in harsh environments, as well as offshore platforms, seaports, geological and oceanographic applications.

- Bronze alloy for superior corrosion resistance in seawater and other aggressive environments
- Available in Series ITS, Series IPT, Series IGE and Series IT
- IP67 standard environmental sealing and IP68 available
- Seawater resistant



AMPHE-EX™

- Suitable for: copper, optic fiber, coax and hybrid
- Flexible options for layouts
- Corrosion-resistant coating



ECO|MATE SERIES

- Robust design and compact design
- Universal cable entry
- Straight and angled versions with screw, solder or crimp technology



MIL C5015

- Round screw connector manufactured from high-quality aluminum alloy
- Very widely applicable in industrial applications



With our extensive range of products, we ensure a safe working environment. If you need specific information, our experts are eager to assist you.



IDENTIFICATION ENSURE RECOGNITION AND SAFETY

PRODUCTS

Wire & cable coding

Labels & tags

Printers & software - Identification

Conductor marking

Warehouse identification

Printers & software - Signage



WIRE & CABLE CODING

Wire and cable coding provides clear and durable coding. The range includes (self-laminating) labels, tags, shrink sleeves and cable flags, which have a wide range of wire and cable marking applications. The items are available in various sizes and materials and can be printed with one of the label printers in the range.



SELF-LAMINATING LABEL

- Imprint is protected by the laminate
- Resistant to water, oil, dirt and chemicals
- Strong adhesive acrylic layer for adhesion to cables, wires and hoses



SLEEVES

- Printable shrink tubing for permanent identification
- Good resistance to water and chemicals
- Suitable for an industrial environment



TAGS

- Excellent resistance to weathering, oil and chemicals
- Applied with 2 cable ties
- Halogen-free polyurethane



GENERAL WIRE AND CABLE CODING

- Special flag labels for e.g. optic fiber
- Wrap-around vinyl fabric labels
- Stainless steel engraved cable coding



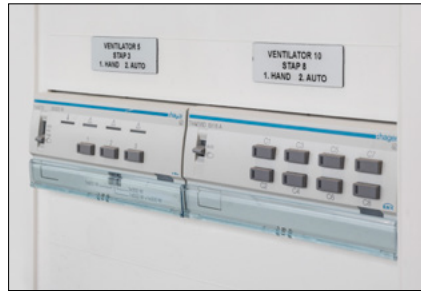
LABELS & TAGS

A complete label identification solution that helps companies increase productivity, safety and security. Print your own labels using blank labels with a variety of applications, such as marking wires, cables and circuit boards. Pre-printed labels can be used to communicate important safety and/or general operation messages.



RATING PLATE

- Labels that remain legible even under the harshest conditions
- Extremely resistant to chemicals and mechanical influences



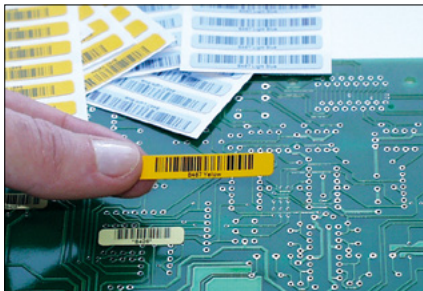
ALTERNATIVE TO RESOPAL

- Extra strong adhesive layer for excellent and permanent adhesion
- Resistant to weathering and various chemicals



TAGS

- Can be used for many purposes e.g. Lockout Tagout, approval and rejection of goods
- Suitable for indoor and outdoor applications
- Resistant to oil and many chemicals



LABELS FOR PCB AND COMPONENTS

- A solution for even the smallest objects
- Resistant to high temperatures (PCB)
- High-quality polyester or polyimide



FRAUD-RESISTANT LABEL

- Polyester void labels
- Leave a mark upon removal
- Protect your products and name
- White or silver



GENERAL IDENTIFICATION

- High-quality polyester materials
- Also for adhesion on uneven substrates
- Resistant to mechanical influences and most chemicals

PRINTERS & SOFTWARE IDENTIFICATION

The thermal transfer label printers are designed to print top quality labels. These desktop printers can be used to print labels for numerous applications. For example, for wire and cable coding, labeling cabinets, panels and control panels, marking terminals, identifying products and much more.



M210 & M211 PORTABLE PRINTER

- Design and print labels intuitively (mobile)
- Save label designs for later use
- 300 prints with one full battery charge



M610, M611 & M710

- Printing using smartphone app or via touch screen or keyboard
- From 50-76 mm wide
- Formatting via Brady Workstation software



COMPACT AND INDUSTRIAL LABEL PRINTERS

The PRO310 and PRO340T are equipped with an industrial stepper motor, ensuring stable operation. The compact PRO310 and light-industrial PRO340T label printers are the best choice for medium to large print jobs and when handling different label sizes and materials.

- Desktop label printer
- 300 dpi (12 dots/mm)
- Color LCD with buttons
- Wireless Wi-Fi / Bluetooth



M511 - FOR LARGER LABELS

- More than 8 hours/1000 labels with a full battery
- Up to 38mm wide
- Resolution of 300 dpi for 1D and 2D barcodes
- Resistant to falls of up to 1.8 m



I7100

- Highly accurate and reliable industrial label printer
- High print speed
- Printing of labels, shrink tubing and tags

CONDUCTOR MARKING

Know the contents of your conductors. Unidentified or inadequately identified conductors are definitely a real hazard. Ignorance of the contents of a conductor can have dire consequences for both workers and the plant. As an employer, you are required to identify conductors according to European Directive 92/58. This directive is ratified in the Netherlands by RD 530 'Safety and health signaling'. Our conductor markers are coated with an additional laminate after they are printed, making them weather resistant and able to be used outdoors for years to come.



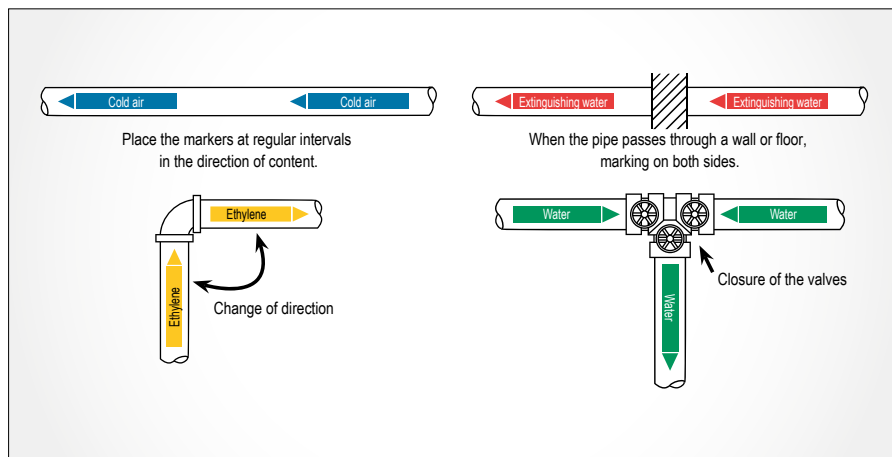
CONDUCTOR MARKING ROLL SHAPE

- Visibility and readability from any direction
- Optimal attachment around the conductor
- UV resistant and industrial quality



CONDUCTOR MARKING STANDARD

- Available in 4 sizes
- Pre-punched arrows
- Quick to apply



WAREHOUSE IDENTIFICATION

A warehouse with proper identification pays off. Increase efficiency to find or store goods quickly and accurately through clear identification. Warehouse labels help make and keep the warehouse organized. Combined with a label printer, proper labels can be created quickly and efficiently. You can also choose to order warehouse labels ready-made, requiring only a database to be supplied.



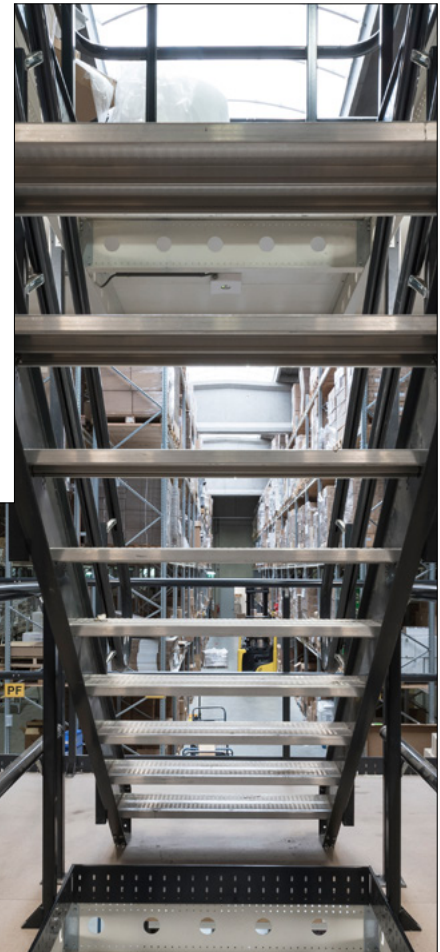
MAGNETIC LABELS

- Permanent magnetic foil, 0.6 mm thick
- On 30-meter rolls
- Flexible and easy to process
- In white and yellow as standard



PRE-PRINTED LABELS

- Your labels delivered ready-made
- Different materials
- Printed in color and exactly according to your wishes



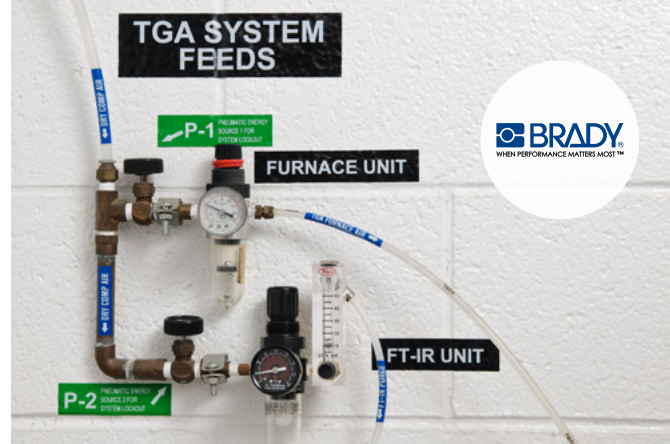
LOGISTICAL MARKING

- Indoor and outdoor floor marking
- Demarcation
- Application of floor marking



PRINTERS & SOFTWARE SIGNALING

Print your own site and safety identification with one of our signaling printers. The various pictogram and label printers offer ways to print labels quickly and efficiently, helping you avoid unsafe or unclear situations. Create your own design using the software. Depending on the printer, you can print and even cut out the label in one or more colors. These include conductor coding, safety signaling, signage, tags, CLP/GHS labels and general labeling.



I5300

- 178 mm color touchscreen
- Built-in automatic cutting blade
- Material changes in 20 seconds
- Label widths from 5.08 mm to 101.6 mm



S3700 MULTICOLOR & XY PRECISION BLADE

- Lasts up to 60% longer
- Material changes in 20 sec
- Print speed up to 127 mm/sec
- Width up to 101.6 mm



J2000

- Practical and easy-to-use full color label printer for printing on continuous rolls and on pre-punched labels
- Free Brady Workstation Basic design suite





We make sure everything arrives at our customers neatly and well packaged. Every order, large or small, is processed and shipped with enthusiasm and dedication!



SAFETY

ENSURE CONTROL OF HAZARDOUS SITUATIONS

PRODUCTS

Lockout tagout

Safety showers

Safety gates

Modular stairs & work platforms

Loading platform systems, gangways

Anti-slip products

Cable bridges

Safety hooks

Safety signaling

Torches



LOCKOUT TAGOUT

Thanks to Lockout Tagout products, accidents can be prevented. Every year, thousands of workers are injured, fatally or otherwise, during repair and maintenance work on installations, industrial power equipment and machinery. Many of these accidents are caused by inadequate locking of the energy supply. Lockout Tagout is the way to avoid releasing energy in an unexpected way. Nedelko does the inventory for you so you comply with the latest laws and regulations.



PADLOCKS

- High-quality safety locks
- Durable and reliable
- As keyed-alike and keyed-different
- In multiple colors, sizes and materials



LOCKOUT FOR ELECTRICAL HAZARDS

- Simple to use
- For example, for auto switches, screw fuses, plugs, switches, etc.



LOCKOUT FOR MECHANICAL HAZARDS

- Made of durable materials
- E.g. for valves, ball valves, butterfly valves, etc.



ACCESSORIES

- In support of the LoTo procedure
- Lockout Tagout storage systems
- Multi-padlock brackets, Lock boxes, identification tags, etc.



TAGS

- Indicate, among other things, who is responsible
- Made of durable flexible polyester
- Resistance to weather influences
- Dutch, but also in other languages



SHADOWBOARDS

- Clear and efficient storage systems for your LoTo products and documents
- Made of robust materials
- Personalization with your logo and/or other info

SAFETY SHOWERS

We are your expert in the field of safety showers. The products are distinguished by ease of use, durability and reliability. Essential when working with hazardous materials. Such substances carry the necessary risks. With a safety shower from FSP-Tech nearby, the unpleasant consequences of an emergency are prevented or reduced. All showers comply with applicable standards and laws (ISO NEN 15154).



TANK SHOWERS (ALSO FOR EX ZONE)

- The most reliable and safe indoor and outdoor solution
- Heated water for body and eyes



FROST-FREE SHOWERS (ALSO FOR EX ZONE)

- Industrial frost-free emergency and eye showers
- Stainless steel construction with high-quality insulation and electrical tracing



EYE SHOWERS

- Eye showers with collection tray and cover
- Robust and highly durable
- Optimal visibility due to shape and size



INDOOR SHOWERS

- Robust, solid and reliable
- Stainless steel piping and components
- Freestanding, wall mounted or top mounted



THERMO SHOWER

- Water heated by boiler
- For indoors and outdoors
- For where a tank shower is too tall
- Option for additional outlet for 2nd shower

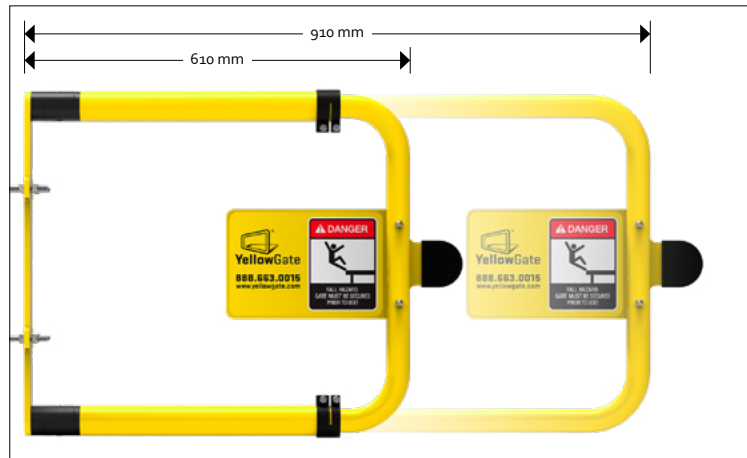


TANK SHOWER RENTAL

- For use during shutdowns or other major maintenance
- Easy to transport by forklift
- Suitable for Ex-zone

SAFETY GATES

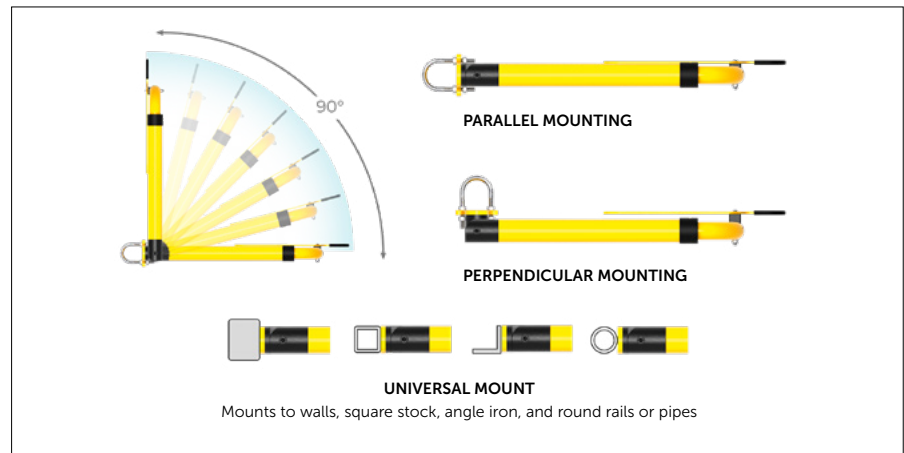
This universal safety gate allows you to use one gate for numerous applications. No need to measure, you can order directly. The YellowGate universal swing gate is easily adjusted from 61 to 91 cm. You do not need any additional parts for this. The swing gate can be installed without cutting, welding or drilling, and the direction of rotation is easily adjusted. The YellowGate universal safety gate is OSHA compliant. And with extension piece it is in accordance with EN 14122/3.



UNIVERSAL SAFETY GATE

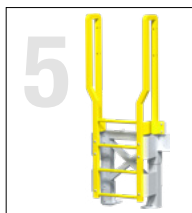
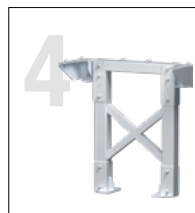
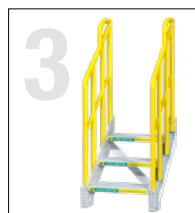
- Mounts anywhere, no additional parts needed
- Adjusts from 24" to 36" (61 - 91 cm)
- Field adjustable, no cutting, welding, or drilling
- OSHA Compliant
- In Stock, Ready to Ship

Easy as **1/2/3**



MODULAR STAIRS & WORK PLATFORMS

Safe, spacious and easy to place and move. Work platforms and ladders are designed to keep users safe and compliant. The systems are also built to last. Made of durable yet lightweight aluminum, the mobile work platforms offer corrosion-free longevity and noticeable ROI. And standard features such as full-size hand rails, a hard-wearing anti-slip profile and a stable design ensure maximum safety.



MODULAR STAIRS & WORK PLATFORMS

- 3D design configuration (on-site) to your needs
- Drawings (.step) and data sheets can be provided upon approval
- The entire structure is made up of only 5 base modules. For less cost than customization
- No welding or fabrication required due to quick bolt assembly
- OSHA compliant



MOBILE STAIRS & WORK PLATFORMS

- Increases efficiency - Access where and when you need it
- User friendly - Easy to roll and steer. For safe access to valves or machinery
- 4 models for every access need
- Very versatile - many applications in aerospace, maintenance and production



LOADING PLATFORM SYSTEMS, GANGWAYS

Loading platform systems, elevated loading racks and safety cages for trucks and wagons, maintenance work platforms, rolling scaffolds and related safety and fall protection products. We design and deliver platforms to meet the unique specifications of each project. Customization of both terminal and mobile units to maximize safety and performance. Can be installed and assembled within a few hours.



LOADING PLATFORMS FOR TRUCKS AND WAGONS

- Higher productivity when loading rail wagons and trucks
- Safer, ergonomically designed systems
- World-class customer service, advanced technology, quality designs and years of experience
- We work together with your team and our engineers



GANGWAYS & TAIL GATES

- Reduced driver muscle strain and injury by requiring less than 17kg to raise or lower
- Designed without pinch points, preventing possible hand injury
- Special guide bushings at the pivot points and load-bearing pivot rods. These self-aligning bushings reduce wear and maintenance problems
- Without these bushings, gangways become shaky over time and more difficult to lift and lower



GANGWAYS FOR SHIPPING

- Advanced, corrosion-resistant aluminum gangways are designed for safety, and are built to order to your required length and specifications
- Variety of walking surfaces; diamond, stamped aggressive, extruded curved, cleats etc.
- Options with a crane, which can be included. Choice counterbalanced springs, manual operation, pneumatic or hydraulic cylinders, or a pneumatic, hydraulic system

ANTI-SLIP PRODUCTS

ProGrip offers the most durable and versatile anti-slip solutions made of fiberglass-reinforced polyester. By using aluminum oxide granules and a unique formula and process, the products meet the most stringent standards (EN 131) in floor safety. ProGrip provides a 15-year warranty on its anti-slip solutions. Customization is also possible. The products are used under the harshest conditions, such as in the food, offshore and oil and gas industries. Examples include stair treads, ladder rungs and grid and checker plate floors.



STAIR NOSING

- Virtually indestructible, completely splinter and crack free and also weather resistant
- Ice and snow do not adhere to this material, making stairs safer in winter



STAIR TREAD

- Durable solution for dangerous, slippery stairs
- Available in 4 different grain sizes and also fully customizable



LADDER RUNG

- Reduce the risk of slipping and increase ladder safety
- Also available with a luminescent finish; increased visibility in low-light conditions



PLATE

- Made of polyester, reinforced with fiberglass, topped with an aluminum grain
- Available in all RAL colors (standard in black, gray and yellow)



ANTI-SLIP TAPE

- Quick and easy to apply to almost any surface
- Can be customized if desired, e.g. in your own color or size



CABLE BRIDGES

Pro-Install rubber cable bridges provide safe passage in locations where cables and cords are on the ground. They also ensure an orderly workplace. Equipped with a bright yellow lid and an anti-slip surface, the cable bridges help prevent falls. Available in 2-channel, 3-channel and 5-channel versions, they are suitable for commercial and industrial use and can be extended to any length.



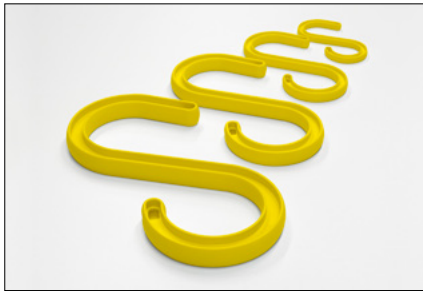
CABLE BRIDGE

- In 2-channel, 3-channel and 5-channel design
- Load to 5,000 kg
- In straight and 30-degree design



SAFETY HOOKS

Safety hooks contribute to a safe workplace. Cables, wires and hoses are hung with ease due to the simple and effective S-shape. Made of fiberglass-reinforced polyester, they neither conduct heat nor electricity. The CableSafe safety hooks are used, for example, at companies in the (petro)chemical and offshore industries, in power plants and in shipbuilding. The hooks are available in 4 different sizes, each with its own carrying capacity.



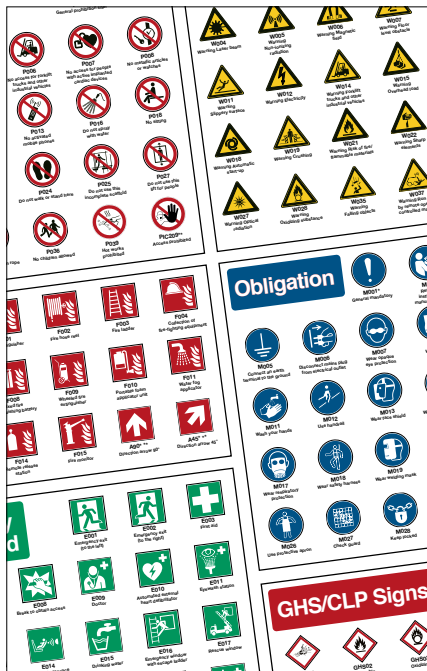
SAFETY HOOKS

- Conducts neither heat nor electricity
- Standard color yellow
- 4 different sizes/carrying capacities: 6"/40kg, 9"/55kg, 12"/190kg and 15"/300kg



SAFETY SIGNALING

Safety signaling is indispensable in accident protection. The range consists of pictograms and safety signs and complies with the current NEN-EN-ISO 7010 standard. This standard applies to safety signaling in workplaces and other places where people need to be informed about matters related to safety, such as emergency exits or warnings of dangerous situations, etc. The pictograms are available in different sizes, designs and materials. Suitable material is available for even the harshest conditions.



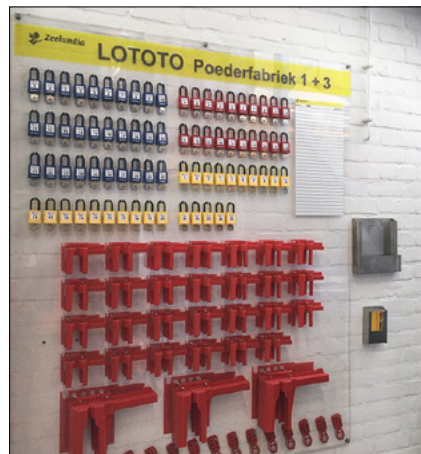
SAFETY ICONS

- Warning, instruction, prohibition, rescue and evacuation, GHS, etc.
- Durable and suitable for indoor and outdoor use
- Many different materials available
- Customization possible with company logo or a collection of icons



INDOOR AND OUTDOOR SIGNS

- Safety signs, sublimation signs and shadow signs
- Tailor made



FLOOR MARKING OUTSIDE

- Designation of footpaths and parking spaces, for example
- With or without reflection beads



TORCHES

The torches and head lamps use advanced LED technology. The Ledlenser brand comes from Germany, has been around for more than 25 years and has grown to become a leading player in the market. The unprecedented variety of products are available for a variety of purposes. The range includes: all-round, sports, outdoor, industrial and even Ex-certified lamps.



P7R WORK TORCH

- Extremely powerful and versatile
- Advanced Focus System for efficient, precise flood and spot lighting
- Rubber covers on the lamp head and end cap



W7R WORK - SMART, INNOVATIVE

- 2 light sources (flat and UV light)
- Continuously adjustable color temperature
- Expandable and rotatable (270°)
- Rechargeable USB-C



H7R WORK - ADVANCED FOCUS SYSTEM

- Neutral white light
- Infinitely dimmable and focusable
- Intuitive to operate



EX7 FLASHLIGHT

- Safe for use in Ex zone 0/20
- Patented Advanced Focus System
- Large magnetic switch
- Battery life up to 45 hours



WORKER'S FRIEND

- Innovative 4-in-1 lamp: comes with focusable bit, mount to make it a portable lamp, flexible attachment for hard-to-reach areas and attachment for inspection



HF8R WORK - ADAPTIVE LIGHT BEAM

- Efficient battery usage (temp control system)
- Waterproof (IP68)
- Emergency light in case of power failure



We process your application with skill and enthusiasm. With our extensive range of products, we ensure a safe and pleasant working environment. We are happy to provide you with all the details.





**SUSTAINABLE
SOLUTIONS
FOR A WIDE
VARIETY OF
APPLICATIONS**

PRODUCTS

Batteries

Rechargeable batteries

LED lighting

BATTERIES

Guaranteed performance even in extreme conditions. Procell® batteries provide a reliable and long-lasting power supply for all professional, battery-powered equipment. The batteries are available in all common designs and meet the increasing demand for improved performance.



PROFESSIONAL BATTERIES

Through intensive testing and analysis of devices in its laboratories, Procell® has discovered a way to dramatically extend the life of alkaline batteries.

The solution: Device-specific industrial alkaline batteries, each with a unique current profile.

Choose the right battery for your professional device's power needs to ensure they last longer. This will save your company money on the purchase of batteries as well as reduce the labor cost to replace them. It's more environmentally friendly too.

The portfolio includes Procell® Intense Power and Procell® Constant Power alkaline batteries.

Also available are industrial Procell® Lithium button cells that provide reliable and safe power to professional devices.



INTENSE POWER

- For long-term performance in professional devices that use a lot of energy
- Up to 30% longer life (compared to previous Procell® alkaline batteries)



HIGH POWER LITHIUM BATTERIES (3V)

- Even and low self-discharge
- Strict quality standards (ANSI / IEC)
- High resistance to extreme temperatures from -20°C to 60°C



LITHIUM BUTTON CELL

- Industrial, reliable batteries that provide safe power to professional devices
- High energy density (3V)
- Even and low self-discharge

RECHARGEABLE BATTERIES

The wide range of batteries is available for both stationary and cyclic use. The batteries are characterized by economic use combined with high-quality performance and find their application in data centers and wind farms, for example.



POWERFIT VDS BATTERIES (FIRE PROTECTION)

- Batteries that can be used for multiple purposes
- Both cyclical and stationary versions



DRYFIT BATTERIES (MEDICAL DEVICES)

- Exide gel batteries
- Have stood for the highest quality for decades



SPRINTER P/XP BATTERIES (ENERGY STORAGE/UPS)

- Uninterrupted power supply
- For UPS applications and other safety systems



LED LIGHTING

Our mission is to play a key role in the energy transition with innovative LED products and services. Research shows that LED lighting is often the first step in sustainability. Our Prolumia brand operates in the European LED market, offering high-quality LED fixtures at competitive prices. LED lighting provides savings. Using our LED products also results in less environmental impact, as our products are produced as sustainably as possible and the materials are easily recyclable.



WHY CHOOSE PROLUMIA?

LED lighting where quality is paramount. That's Prolumia. Through our five comprehensive product groups, consisting of linear lighting, indoor and outdoor lighting, industrial lighting and public lighting, we meet virtually any lighting need.

We also strive for sustainable customer contact, sound specialist advice for every issue and provide just that little bit of extra service.

Whatever it is, Prolumia does not compromise.

INDOOR LIGHTING

Attractive in every detail

Innovative lighting solutions for stores and offices, more than just light! It leads the way for people, creates a pleasant (work) environment and draws attention to points that could be emphasized more, such as a store presentation, a sales counter or a conference table. Whether for general lighting or creating fascinating accent lighting, Prolumia LED indoor lighting fixtures offer a suitable lighting solution for every space.

LINEAR LIGHTING

Flexible for every conceivable configuration

Every environment requires different lighting characteristics. Prolumia LED linear lighting can be integrated into any design and are exceptionally quick and easy to install. With an extensive range of high-quality LED strips and modular linear lighting systems, no configuration is impossible. For example, the LED strips are available in a range of different light colors and with finishing profiles. Depending on the area of application, the LED strips are also available in different IP ratings.

PROLUMIA, STRONG IN 4 CORE SEGMENTS

- Housing construction
- Public lighting
- Parking
- Utility & warehouses

Our lighting specialists provide customers with sound advice, good product and project support, and excellent after-sales service. Feel free to request a lighting calculation.





OUTDOOR LIGHTING

Effective outdoor lighting

Prolumia LED outdoor lighting is very efficient. Using the unique sensor technology with convenient dimming options, various light intensities and lighting options, any outdoor project can be smartly designed. Not only for porches, galleries and passageways, but also for public spaces, Prolumia has the best waterproof fixtures in its range.

INDUSTRIAL LIGHTING

Industrial revolution

Prolumia LED industrial lighting is specifically designed for lighting industrial areas, such as factory halls, warehouses, business premises and parking lots. Everything from renovating existing fixtures to fully renewing lighting systems are among the options. The most innovative LED solution is key to this.

PUBLIC LIGHTING

Functional & contemporary

The public lighting market is in a state of flux. Prolumia presents next-generation LED technology for industrial, urban and provincial contemporary applications. From areas where pure functionality plays a role to more public areas where aesthetics matter more. Prolumia has a wide range of fixtures that can provide a suitable lighting solution for any area.





HEADQUARTERS

NEDELKO B.V.

Riga 10
2993 LW Barendrecht
T +31 (0)180 64 54 00
E info@nedelko.nl

OFFICES

NEDELKO BELGIUM N.V.

Prins Boudewijnlaan 49
2650 Edegem
T +32 (0)3 826 99 99
E info@nedelko.be

NEDELKO S.R.O.

Ke Slivenci 48
154 00 Praha 5 - Lochkov
T +420 222 563 003
E info@nedelko.cz

NEDELKO GERMANY GMBH

Feldbergstr. 57
61440 Oberursel
T +49 6171 8989 594
E info@nedelko.de

NEDELKO

YOUR TECHNICAL SPECIALIST.

WWW.NEDELKO.EU